

WATERBEACH COMMUNITY ASSOCIATION

Beach News

WATERBEACH - LANDBEACH - CHITTERING

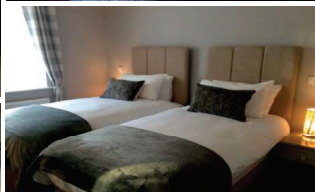
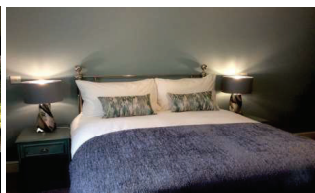
Winter 2018
No.257



The Old School House

9 Greenside, Waterbeach

Quality Bed & Breakfast



Tel. 01223 861609 www.theoldschoolhouserrooms.co.uk

**Did you know that our Conservatory and Breakfast Room
are both available for small get togethers,
Family Gatherings, Christenings,
Afternoon Tea Parties, Business Meetings etc.?**

Proprietors, Tommy & Dee

BEACH NEWS

Journal of Waterbeach Community Association

www.waterbeach.org



'Beach News' is edited and distributed entirely by non-professional volunteers and is delivered free to residents of Waterbeach, Landbeach and Chittering four times a year.

The Association welcomes contributions on subjects of local interest but reserves the right to edit or omit articles without notice at their discretion.

Whilst every effort to ensure contents are correct on going to print the Association cannot accept responsibility for any omissions or errors.

Views expressed in articles are not necessarily those of the Association and we have no control over the nature, content and availability of any website or link referred to.

Articles for inclusion in 'Beach News' should be emailed to
beachnews@waterbeach.org

Advertisements published in 'Beach News' are subject to individual agreements between advertisers and readers and the Association cannot be held responsible for the quality of goods or services supplied.

Please refer any problems with advertisers to
Jacqui Rabbett 01223 860993.

The nature of production makes publication dates uncertain but editions should appear as follows:

No. 258 (Spring) 2nd March 2019 – copy by 8th February 2019

No. 259 (Summer) 18th May 2019 – copy by 26th April 2019

Whilst every effort will be made to adhere to this schedule unforeseen circumstances may delay or restrict publication or delivery and no responsibility can be accepted for late or non-appearance.

WHERE TO SEND YOUR ARTICLE

If you would like information on your group to be published in Beach News, or have some interesting news to share, write an article and send it along. Email it to **beachnews@waterbeach.org** or send it to 5 Spurgeons Ave, Waterbeach, Cambridge CB25 9NU.

If you have posters detailing one off local events that you would like put up in the Associations notice boards at Waterbeach Green and School entrances on High Street and Way Lane, please post three copies to 5 Spurgeons Avenue, Waterbeach, Cambridge CB25 9NU (Maximum size poster A4 in portrait format).

Front cover – Frosty sunrise, Bottisham Lode (Photograph by Richard Youell)

Contents

Community Association	1	Waterbeach United Charities	19
Waterbeach Village Society	2	Tithe Barn Trust	20
WASPS	3	Waterbeach Cycling Campaign	21
District Councillor Update	4	Healthy 4 Life	22
Toddler Playgroup	5	Surgery Christmas Closures	22
Eddie's	6	Special Visitor!	23
Community Land Trust	7	Carols on Waterbeach Green	23
Farmland Museum	8	Waterbeach Scout Group	24
Beach Social Club	9	Fire and Rescue Service	24
Military Heritage Museum	10	Waterbeach United Charities	25
Beaches Community Car Scheme	11	Age UK	26
Community Warden	12	Home Security Tips	26
Museum of Cambridge	12	Plastics	26
Waterbeach Past	13	Happy Folks Club	27
Friends of Worts Meadow	17	Stronger for Longer	27
Fen Edge Twinning Association	18	Update from Lucy Frazer MP	28

Community Association



Christmas - As usual Waterbeach Community Association will be holding the annual 'Carols on the Green' on Christmas Eve at 6.30pm. The carol sheet will be available on the evening or you can download a copy in advance from www.waterbeach.org. Please remember to bring your lights, torches, lanterns etc. as lighting is limited on the Green. This is always a popular and well supported event and a fantastic way to start your Christmas celebrations.

We would like to take this opportunity to thank Captain Carol Baker from the Salvation Army who will lead this year's 'Carols on the Green', and the bands of the Salvation Army and Waterbeach Brass for providing the music. We also thank Urban&Civic who kindly donated the tree and Bannolds for transporting it, Gary Langley and



team for doing their magic with the lights around the Green and having everything looking festive - many thanks to them all.

This year's collection on Christmas Eve will be in aid of 'Eddie's', a local based charity supporting children, young people and adults with learning disabilities and their families and carers across Cambridgeshire (see page 6). Please bring your loose change and give generously to the collectors on the night. There will also be a collection bucket near the bands on the Green.

Feast 2019 – The date has been set for Sautrday 8th June. We will continue to work through the alphabet and therefore the 2019 them will be 'Something beginning with M.....' It's never too early to start thinking of ideas!

To organise the Feast requires a solid team of dedicated people. Whatever your skill or available time there's something you can do. You don't have to be young and agile, there are many jobs that can be done from the comfort of your own home in the months leading up to the Feast – whether it's helping with bookings, sending out letters, researching possibilities for arena events, or publicity. Help is also required on Feast Day itself, especially manpower. A group of volunteers who are willing to work as a team are needed to set up for the event and clear away afterwards. If you feel you may be able to assist to organise Waterbeach Feast 2019 or have any questions, contact Jacqui Rabbett on Tel: 01223 860993 or Email: feast@waterbeach.org

Beach News - Thank you to everyone who has made our village publication so varied and interesting throughout the year. We really appreciate all your contributions. A special thank you also to our team of Beach News deliverers who volunteer to deliver the magazine throughout the area.

It just leaves me to say, on behalf of all the committee of Waterbeach Community Association, have a very Merry Christmas and a Happy New Year.



Waterbeach Village Society

Waterbeach Village Society meet on the fourth Wednesday of each month (September to May) in St John's Church Room behind the church at 7.30 pm for 7.45pm prompt start. We try to have a varied and interesting series of talks and this is our programme for December 2018 – March 2019. If you are new to the village you will be very welcome.

Wednesday 12th December - The History of Gilbert and Sullivan their lives and music. Includes musical excerpts by the speaker, Anne Datson, who is a singer and actress - an entertaining evening just right before Christmas.

Wednesday 23rd January 2019 – Our short AGM with something else to interest everyone.

Wednesday 27th February - From Work House to Playhouse. The history of Mill Road Cambridge: A Road with a long and varied life unravelled. Returning to us Becky Proctor.

Wednesday 27th March - Darjeeling Highland Railway. Promises to be a fascinating illustrated talk on one of the iconic railways of the world. We are fortunate to have Martin Collins, Director and Hon. Sec. of the DHR Society. Members are free and visitors £3.00 which includes tea, coffee and biscuits.

WASPS



Can you believe we are over half way through the Autumn term already? The children have been busy at the club enjoying their time both inside and outside, playing with some new games and resources and taking part in arts and craft activities, role play and construction to name just a few things!

We held our AGM on 4th October and welcome our newly formed Management Committee of 5 volunteering parents/carers. Thank you to everyone who was able to come along and attend the meeting and to those who have joined the Committee, it was good to see you all! We thank our outgoing Management Committee for all their hard work and the time they have dedicated to WASPS; many have been Committee Members for a number of years. We are able to co-opt more people onto the Committee throughout the year, do you have relevant skills and experience to share regarding childcare? Personnel experience? Building maintenance knowledge? Do you have connections to WASPS or an interest in supporting the club? If so, we would love to hear from you!

We held a successful outdoor working party along with the Community Playgroup (with whom we share premises) on Sat 6th October. Thank you to everyone who turned up to garden, sweep and tidy, despite the rain! Your help was very much appreciated.

Are you having a sort out of your children's toys before Christmas? If so, please keep WASPS in mind. We would welcome donations of good quality complete games and puzzles, dressing up costumes and suitable compilation CDs e.g. pop music (preferably relatively current) or party mixes. During the October Half Term Holiday Club, the children joined in with a variety of activities, they particularly enjoyed making slime, making jam tarts and creating Halloween cupcakes! Another highlight was the 'Oreo cheesecake', although only a couple of children wanted to make it...many more wanted to help eat it!

Our next Holiday Club will run in the Christmas Holidays, we will be offering sessions on Thursday 20th and Friday 21st December, so if you need to do some last minute shopping, why not book the children in to have some fun? We will also be offering sessions on the January Inset day, Thursday 3rd January 2019. Look out for more details and planned activities coming soon! The club is open to 4-11 year olds, 8 a.m. – 6 p.m. for a full day. We also offer flexible booking with half day sessions and bookings for a minimum of 2 hours. Half day sessions can also be extended on an hourly basis and a sibling discount is available. Snacks and drinks are provided throughout the

day, but a packed lunch is required from home please. Bookings must be made in advance and families must be registered with WASPS.

Breakfast Club runs from 7:45 a.m. – 8:50 a.m. and **After School Club** runs until 6 p.m. on all school days. Our term time clubs are currently quite busy with limited availability. Please inquire to book a place.

Contact us: For more information, please visit our website: www.waterbeach-wasps.org.uk or telephone 01223 861140 during opening hours. Outside of opening times, please leave a message and a member of the team will return your call when convenient. If you would like to book a time to call in and meet the team prior to making a booking, please let us know.

District Councillor Update

The Local Plan was formally adopted by South Cambridgeshire District Council on 27th September 2018 following feedback from HM Planning Inspectorate that the plan with all its modifications is deemed to be “sound.” Any planning applications must refer to this document closely.

The six week public consultation period for the Waterbeach Supplementary Planning Document closed on Friday 26th October. Officers are now examining the representations made from members of the public before the final version of this document goes before the Scrutiny and Overview Committee and then to Cabinet. The SPD provides an overview of the two developers’ plans for the new town.

Royal London Waterbeach were granted planning permission in September to build a relocated railway station a mile North along the line from the current one. It is proposed that it will open in December 2021. Meanwhile Network Rail have scheduled work on the extensions of the platforms at the current station to start in the autumn of 2019.

Universal Credit was rolled out in South Cambridgeshire on 17th October. This is a benefit for claimants of working age and for now only applies to new claimants or for those who have a change in their circumstances. It is paid directly into bank accounts on a monthly basis and replaces six benefits: Income-based Job Seekers Allowance, Income-Related Employment and Support Allowance, Income Support, Child Tax Credit and Working Tax Credits and Housing Benefits. I have dropped off leaflets in the doctor’s surgery, pharmacy and library in Waterbeach and in the Landbeach Village Hall. If you need information or help surrounding claiming Universal Credit you can either go online to the South Cambs website or call the contact centre on 0345 045 0500.

If you want to get in touch, please contact me at Cllr.Rippeth@scambs.gov.uk or on my mobile – 07956 528223.

Cllr Judith Rippeth

Toddler Playgroup



We have got off to a quiet start at Playgroup this year, with a small but excited group of children! We have been enjoying a variety of different activities this term as we look at Autumn and the changes that are going on around us. The children enjoyed going on an autumnal walk, using their 'journey sticks' to collect different signs of autumn; leaves of every autumn colour, twigs and sycamore seeds. The children were very interested when Mandy came to visit us with Tiny Tim the hedgehog during September. Mandy had been looking after Tiny Tim since his mum had abandoned him. The children loved looking at his prickles and some of them were keen to give him a stroke.

Towards the end of September we held our AGM. This was a time for us to look and reflect over the last year. The 2017-2018 committee stood down at the AGM and a new committee for 2018-2019 was elected. We would like to thank all of our outgoing committee for all of their hard work and commitment over the last year.

We held an Open Morning on Tuesday 16th October for prospective children, parents and carers to come and see a session in progress. It was great to see some new and familiar faces, and we look forward to welcoming them to playgroup in the future.

After October half term we were very grateful to Waterbeach Community Playgroup for allowing us to start joining them for their Forest School session on a Tuesday morning. At the moment we are joining them once a month, with the potential of increasing this in the new year. At the time of writing the children have been for their first session and have really enjoyed themselves, making magic wands and exploring the Forest School area. Thank you to the children and staff at Waterbeach Community Playgroup for letting us join in the fun with you!

We've been busy fundraising this term with a variety of different events. We held a Family Portrait Day on Saturday 3rd

November and our annual Nearly New Sale on Saturday 17th November at Tillage Hall. We will also had a stall at the Winter Fair at the school, ran by the PTA. The children have been busy fundraising too, taking part in an



Autumn Sponsored Search over the October half term. Thank you to everyone who has supported our events this term.

Planning is currently underway for our Auction of Promises, which will be held on Thursday 28th March 2019 at The White Horse, with our auctioneer friend David Palmer coming to oversee proceedings! Look out for further details closer to the time.

We still have spaces available at playgroup for children aged 2 ½ years – school age, during term time only. From the term after a child turns 3 years old, they're eligible to 15 hours government funded.

If you would like any further information on what we have to offer at Waterbeach Toddler Playgroup then please visit our website

www.waterbeachtoddlerplaygroup.org.uk,

email waterbeachtoddlerplaygroup@outlook.com or call 07808357729.

Alternatively feel free to call into one of our sessions and speak to a member of staff.

Eddie's



Eddie's is an award-winning charity based in Cambridge. We work across Cambridgeshire to provide lifelong opportunities for people, of all ages, with learning disabilities to create the lifestyle they choose and be equal and active members of the community.

Everything we do is about valuing and supporting people with a learning disability, and their families and carers. Our vision is a world where people with a learning disability are valued equally, listened to and included. We want everyone to have the opportunity to achieve the things they want out of life.

In 2016/17, we supported 650 children, young people and adults with learning disabilities and their families and carers across Cambridgeshire. 135 regular volunteers helped to deliver these services.

Volunteers are vital to us. Without them we couldn't deliver our services. Especially our young people's befriending scheme and family support service.

We have befriending volunteers who are carefully matched with young people in Waterbeach. They meet up every few weeks and do things they both like, such as watching a film, having a pizza or going shopping. Other Waterbeach residents come along to our Artworks sessions in Milton, where they enjoy arts and crafts, socialising and having fun.

If you would like to find out more about Eddie's or our volunteering opportunities please contact volunteer@eddies.org.uk or visit our website www.eddies.org.uk

Community Land Trust



We continue to make lots of progress with setting up the Community Land Trust for Waterbeach. We were successful in our grant funding application to SCDC. This means that we now have funds to cover the costs of our formal incorporation. We have been drawing up our model rules and will soon be making our application to become a Community Benefit Society.

The housing crisis is still making headlines, with a number of major reports, like the Letwin Review, indicating that something different needs to be done, particularly with the development of larger sites like the one on the Barracks, which is what we are trying to do. Please tell us that you support our aims at www.waterbeachclt.co.uk/support-us.

We have also had several positive meetings with SCDC Housing and Planning Teams as well as Urban&Civic who are keen to see whether we could be part of the New Town development for the benefit of local people. It's great to see how positive everyone we meet is when we talk about our aims. Our steering group continues to meet regularly, and we are always keen for new members to join, so let us know if you want to be involved and tell us how you would like to see us help local people.

We want to see if we can help the new development benefit the village by providing affordable homes and community facilities for local people. We want to help build a vibrant community for the future, where everyone can live, work and play.

One of the key aspects we have been looking at is self and custom build, as this can help to keep the construction costs down as well as raising the quality of homes and getting the community more engaged. With South Cambs being a Right to Build Vanguard Authority, this may offer us a good opportunity to help get people involved in building their own homes and help the Council deliver more self-build plots. Self and custom build covers quite a range of projects, from doing manual work, all the way through to just deciding the details of the kitchen and bathroom. You can be as involved as you want to be, and we want to help facilitate that as well as delivering community facilities too.

The CLT is a membership-based organisation and being a member gives you a say in how the CLT is run and what we are trying to achieve. Anyone who has a local connection to Waterbeach, Landbeach or Horningsea (lives, works or has family there) can join. It only costs £1 and you can sign up at www.waterbeachclt.co.uk/signup or come and join us at one of our events.

Tell us if you need a home!

Most importantly we continue to gather Expressions of Interest for those in need of a home. If this is you, or you know someone who has had to move away, then please fill in the form at www.waterbeachclt.co.uk/looking-for-a-home. The more people who tell us, the better evidence we have for the Council of real need. *Ian Bracey and Waterbeach CLT Steering Group* info@waterbeachclt.co.uk

Farmland Museum



Would you like to enjoy sociable and productive Wednesday mornings with chocolate biscuits, good company and a sense of contributing to our unique local heritage?

Waterbeach and Landbeach have a unique resource on their doorstep; Denny Abbey was an important part of Waterbeach life for centuries before easy access was cut off by the coming of the airfield. The Farmland Museum is the only independent Museum which has Arts Council Accreditation in South Cambridgeshire. Like many small (and large) museums now, it relies heavily on volunteer support.

The Museum and Abbey are closed to the public now and will not open again until April 1st next year when the Farmland Museum will celebrate its 50th birthday. However,

work does not stop over the winter. A team of volunteers continues to go in every Wednesday for a very sociable and productive few hours and the site, whilst jolly cold at times, has a unique atmosphere in the peace and quiet of a winter's day – particularly if it's sunny



but, even in the gloom, there is something special about it. Thermal vests are recommended.

We'd love to have some more local volunteers in our very friendly group. On a regular basis we'd specially like volunteers who could help with the gardening and other site maintenance jobs and help to look after the collections and displays. In preparation for next year, we would also like to recruit some more volunteers to help with school visits, children's activities in school holidays and guided tours.

It's too far and not safe to walk and cycling up the A10 is not recommended. There are several volunteers who live in Waterbeach and if you are interested but don't have transport then it may be possible to arrange lifts.

To find out more visit www.farmlandmuseum.org.uk and go to the Volunteer page. We'd love to hear from you. email info@farmlandmuseum.org.uk for more information and an application form.

Beach Social Club

Since our last article the refurbishment has continued. We have completed the majority of the internal refurbishment, the lounge being transformed with a new ceiling and blinds to compliment the new windows. We replaced all of the lighting in the lounge area and have redecorated all of the rooms. The next stage begins in the New Year and that will be to refurbish the toilets. The pool table is now in the old TV room accessed from the bar and if it proves successful that is where it will remain.

The Harvest Festival Charity Auction raised £1413, which brought the total to £3,600. We presented Waterbeach Community School and Alzheimer's Society with cheques for £1800 each. The two charities sent representatives to talk about their work. Jane Green represented the school and accepted the cheque and told the members how it would be spent. A few days later she sent us some letters of thanks written by the children. They were lovely letters and were put on the notice board for all to see. Thanks children.

The new charities for the next year are Prostate Cancer and Breast Cancer and the collecting starts now.

Future Entertainment

9 th December	Christmas Party for members children.
15 th December	Christmas Draw Night with Ritchie Monroe
18 th December	Beer and Carols
24 th December	Christmas Eve - Eclipse Disco
31 st December	New Year's Eve with Summerland covers band
2 nd February	Back in Time '60's'
16 th February	Valentines with Amanda Russell, singer comedian
2 nd March	Skadust

Keep up to date with our Facebook page and notices around the village and in the club.

The club is fully air-conditioned and the function room is available for hire to members of 12 months or more for parties/meetings etc., at very reasonable rates. We may also be able to accommodate local groups and organisations on an occasional or regular basis, daytime or evenings. The Surgery PPG uses the club for open meetings to give information covering various aspects of social care and St John's Church also use the lounge for talks on a variety of subjects.

Bingo, sessions continue to be popular every Monday evening from 7-9pm with cash prizes and a Jackpot flyer. Everyone is welcome to join us for these sessions provided they are 18+

New members are always welcome. Call in to collect an application form and have a look at our facilities, which include Pool table and Snooker/Darts/Crib teams. Large screen TV with Sky and BT Sport. There is a Beer Garden at the rear where you can take the kids and enjoy the lowest cost drinks in the

area (probably).

Apart from our usual well stocked bar, we always have two real ales that we change weekly for other brands plus a specialist gin and a Pimms bar.

Also we now have Jazzercise here every Wednesday 7-7.45pm everyone is welcome to join in.

Finally a very happy Christmas and New Year to everyone. *Geoff Donovan* Chairman

Military Heritage Museum

Almost at the end of a very successful year for the museum, visitor and donations of artefacts wise, so we can add to the displays for next year. We are still asking for 39 Engineer Regiment photographs and artefacts so if anyone has anything to offer, we would be very pleased. Whilst we are closed until next March some further work will be made to increase the display space.

If you would like to support the museum, we now have a Friends / Supporters membership for only £12 a year. Pick up a form or ask any of the Trustees. Or contact us by email and a form can be sent out to you. It is your donations that enable us to open the museum.

The 514 Squadron Reunion will again be on the village Feast Day, Saturday 8th June so with luck the Battle of Britain Memorial flight or elements of it might well pass over the village two or three times and if we are really lucky, the Lancaster!

Recently the Museum hosted part of a morning for two classes from Waterbeach Community School who were visiting the Barracks and Airfield as well thinking about what its history was and why it is here. We think they had a great and interesting time. Wearing helmets and caps went down well. Many of the children were quite knowledgeable about the forces which was pleasing.

An addition to 'At The Beach', a book about the history of the RAF Base and later RE Barracks is being written and designed by former Commanding Officer Col. David Adamson (Retd.). The RAF were here at Waterbeach for about 25 years and the Royal Engineers some forty years. Our current book has only about 3 pages on the RE's and 35 on the RAF so the balance is being redressed. With luck the Engineer Regiment(s) time at Waterbeach story will be out some time in 2019.

Museum opening days are the first Wednesday and Sunday between March and October, 10am to 4pm. Groups by arrangement all year. Entrance is free but donations gratefully received. We are at The Barracks, Denny End Road, Waterbeach CB25 9PA. We look forward to you visiting us.

Contact Adrian Wright on Tel: 01223861846 or email waterbeachmilitarymuseum@waterbeach.org. Follow us on Facebook.

Beaches Community Car Scheme

Volunteers and coordinators needed urgently

Beaches Community Car Scheme provides an essential service. It must not fail because of lack of support. We must not let our older residents down.

Beaches Community Car Scheme provides an essential service for residents of Waterbeach, Chittering, Landbeach and Horningsea who are not able to drive themselves and do not have any other access to reasonably priced transport for medical appointments and some other activities. Even a trip to the village surgery can become a major worry if you can't walk more than a very short distance and we have many elderly people who are no longer as fleet of foot as they once were and/or are no longer able to drive.

Beaches Community Car Scheme cannot operate without a team of volunteer drivers and more are needed.

If you could spare even a little time once in a while to give someone a lift **PLEASE** consider whether you could help the scheme.

- Drivers do not have to commit a regular amount of time each week, they do not have to volunteer for a journey request if they are busy with some other commitment.
- Drivers get paid a mileage allowance.
- Drivers will need to have a DBS check. They do not have to pay for this.
- Drivers must check that their own insurance company will allow them to drive for the scheme under their policy. Most policies will allow this provided the insurance company knows about it.
- Drivers meet some lovely people. Many have very interesting stories to tell. They are immensely appreciative of what the Car Scheme offers. The Scheme helps to keep people living independently in their own homes.

We also urgently need one, or preferably two, (and three would be wonderful) people to act as coordinators and arrange drivers for requested journeys. Coordinators take turns to do this for two week shifts. The bigger the team the less often the shifts come around. A mobile phone is provided. Some experience of using a very simple spreadsheet is needed (though training will be given.) It requires about an hour a day during the two week shift. This is an essential part of the scheme; the coordinator does not have to be a driver. Please consider whether you might be able to help with this. If you think you might be able to help or would like to know more, contact Mike Dean on 01223 575698 or phone the Car Scheme mobile 07807 875878 and leave a message.

Community Warden

My name is Mary, I am the new Community Warden for Waterbeach, Landbeach and Chittering.

I have been in post since mid-April and have started to work with a small group of people within the villages. The Community Warden Scheme is provided through Age UK Cambridgeshire and Peterborough and helps people over 60 years to remain living at home as independent and safely as possible. As a Warden I will make daily contact, Mon to Fri either by a phone call or a visit. Some of the things I can help you with are shopping, prescription collection, making phone calls on your behalf, help to complete forms, liaise with other services, arrange home safety checks etc. I can help with finding a home support, handy person or gardener, or how to order meals on wheels. Most of my time has been spent talking through daily topics, old memories, good and bad and providing a listening ear. There is a small weekly charge for this service.

I would like to thank the Parish Councils Group who researched all the working models possible and obtained funding for the scheme to be in place. If you would like more information or to refer a neighbour or friend, please do give me a call on 07977219403. If I do not answer, please leave your number and I will return your call promptly.

Museum of Cambridge

Tracing Traditions is a two-and-a-half-year project funded by Esmée Fairbairn Collections Fund at the Museum of Cambridge. It follows the work of Enid Porter, a prominent oral and folk historian and the Museum's longest serving curator who largely shaped the Museum of Cambridge's collection, as it explores how traditions are remembered and reinvented in modern Cambridgeshire. Enid strove to collect and preserve local heritage for future generations, recording stories and memories giving a unique insight while also contributing to modern English folklore studies. We are reviving her ethos and ideas while we explore more recent, diverse heritage, reflecting and recording stories of development and change.

As it is our final year, we wanted to go big so we're organising an exciting event in January related to local traditions. We're running some free workshops for local communities in the lead up to this so please join us for molly dancing workshops at Waterbeach Youth Club between 7 – 9pm on Tues 5 and 12 December if you want to get involved!

Interested? Email Danny at danny.pedler@museumofcambridge.org.uk or Sarah at sarah.dore@museumofcambridge.org.uk for more information or to confirm attendance.

Waterbeach Past

We are always looking for interesting articles for inclusion in Beach News and in the Summer and Autumn editions of Beach News we published the first two parts of an item forwarded by one of our readers, recalling some of the shops, local businesses and other buildings in Waterbeach from years ago. This is part three.

"I was born in a property called Vine Cottage which stood in the High Street on the northern corner of Cattells Lane. This building was demolished to make way for two modern houses. I've been thinking about the village when I was young and where the different landmarks were, so below is a walk through the village giving as much information as I can recall. I hope it will revive memories for older villagers and be of interest to our newer residents."

Robert Wilson

Corner of Way Lane and Burgess Road Site of The Hopbine public house.



*Mrs Doggett, Landlady of
The Hopbine - 1950s*



The Hopbine public house – 1950s



2018

5 St. Andrew's Hill

Mr. Pascall's shoe repair shop. This was later taken over by Mr. Mick Palmer.



Jack Pascall's Shoe Repair Shop - 1983



2011

Site of 7 Station Road The Methodist church. Now the Salvation Army Hall.

Opposite 12 Station Road behind a tall brick wall The old Co-Op.

Site of 29a Station Road Mr. Billett's bakery. Later to become Benton's bakery. They delivered bread and "fancies" to neighbouring villages and sold their goods from the property next door (No.29).



Benton's Bakery 1986



2018

40 Station Road The Star public house.



On the left The Star, Station Road



Former Star public house - 2018

Entrance to Whitmore Way The Railway Tavern public house run by Mr. and Mrs. Dickerson.



The Railway Tavern/French's Garage, Station Road - 1984



Station Road/Whitmore Way - 2018

On site of 24 Station Road

Mrs. Leach made and sold toffee apples and candy walking sticks from her cottage which is no longer there.

3 Chapel Street

Cudworth's hairdressing shop. Then George Nice's cycle shop and car repairs.



Chapel Street - previously known as Sun Street



Chapel Street 2018

6 Chapel Street

Ken Hayward's hairdressers. Later became a florist's, then chemist shop and soon to open as a coffee shop.



Chapel Street



Pharmacy - 2017

9 Chapel Street

The Chocolate Box general store. Now the Village Stores and Post Office.



The Chocolate Box run by Mrs Hazel



Village Stores - 2018

Land between the Village Stores and 11 Chapel Street Salvation Army Hall



Salvation Army Hall in background



Former Lloyds Bank - 2018



Lloyds Bank 1998

11 Chapel Street Bible study hall. Later a post office, then Lloyds Bank. Now a private residence.

15 Chapel Street Vin Bull's cycle and electricals shop. Later became Leland's. Now a private residence.



Vin Bull outside his Cycle and Electrical Shop



Leland's - 1998

House on corner of Way Lane and Bannold Road The Wheatsheaf public house run by Mr. and Mrs. Tuck.

Site of Josiah Court Josiah Harding lived in a property called "Bannold House" and stored the van which toured Waterbeach and neighbouring villages selling household goods, such as soap, cleaning cloths, hardware and paraffin. The business was later taken over by his son, Jack.

Site of Harvey Way Searchlight station.

Field on left of Bannold Road near to the railway crossing Site for Nissen huts which accommodated the workmen building the runway and buildings associated with the aerodrome.

If you have any memories to add to Bob's, or more of your own, please do get in contact and maybe we can publish them in a future edition of Beach News. We have tried to gather some photos/pictures but if you have any from earlier times that we could use please let us know. We would scan any photos and then of course return them. If you are able to help please Tel: 01223 476601, email: beachnews@waterbeach.org or send to Beach News, 5 Spurgeons Avenue, Waterbeach, Cambridge CB25 9NU.

Photos kindly provided from the Cambridgeshire Collection, Waterbeach Village Society and also private collections from local residents.

Friends of Worts Meadow

If you have visited Worts Meadow, Landbeach since the end of September you may have noticed some pretty drastic management going on in the area between the meadow and the wood. This is where two of our small ponds are and the area used to be very open with scrubby grassland. Over the past few years it has become overgrown with dense prickly scrub mainly blackthorn, brambles, hawthorn and dogwood. As I mentioned in the Summer issue of Beach News our ponds are home to Common Newts and Great Crested Newts. It was particularly with amphibians in mind that we accepted the suggestion from Froglife (the national charity concerned with the conservation of amphibians and reptiles) that we could improve the habitat by clearing the invasive scrub, digging out a new pond and deepening the other two adjacent ponds.

With due permissions this has gone ahead. Currently the site looks a mud-strewn mess as you would expect, but it will soon recover and hopefully the ponds will fill up quickly with the winter rains. The bare areas have been seeded with a wild flower and grass mix and it is hoped to install a bench for people to sit and watch the wildlife. All the work



was done by Froglife and was also partly funded by the Cambridge Community Foundation and the Heritage Lottery Fund.

For our part we helped clear access routes for the digger and will be improving and maintaining the area as it recovers. BUT we can't do this without volunteers! So, if you would like to join any of our work parties then look out for the dates on our Facebook page and or join our email list. On our work party in October we cleaned out many of the nest boxes in Bourne Wood of which we have at least 20 (some are difficult to find!). Over half had nests in them which seem to be mostly Great Tits as observed in May when we did times watches of the boxes. Recently we have also had help from the Community Payback Scheme, who have been clearing swathes of brambles around the moat and along the ditch leading from it. This ditch is currently completely dry and (unusually) so is much of the moat. So a big thank you to them, to our small band of dedicated FOWM volunteers and especially to Froglife.

With the help of CPERC (Cambridge and Peterborough Environmental Records Centre) experts and volunteers our July Bioblitz in Worts Meadow was a great success and around 40 people took part including an enthusiastic bevy of children. We are still waiting for the completed lists of pond life, moths, other insects and creepy crawlies, plants, amphibians and reptiles, but we certainly added many more species to our site list. Hopefully the new and renovated ponds will now become home to even more wildlife. FOWM volunteers help with the practical management of Worts Meadow Local Nature Reserve in Landbeach. It is free to join. Our open events provide the chance to learn about and enjoy the wildlife of the site and help with recording. For more information contact Frances Dipper on 01223 861836, frances.dipper@sustenergy.co.uk.

Fen Edge Twinning Association

An Amazing Anniversary Year for the Fen Edge Twinning Association. 2018 marks twenty successful years of twinning between the Fen Edge villages of Waterbeach, Landbeach, Cottenham, Rampton and Willingham and Avrillé in the Loire Valley. It has been great to see how well everyone has got along regardless of their language ability. We have had a wonderful year of celebrations and would love to welcome new members to join our fun and family friendly weekends.

At the beginning of May, a group of about 50 local residents were treated to a fabulous weekend of celebrations in Avrillé. There was a mix of formal ceremony and general entertainment to commemorate both our anniversary and an amazing forty years of partnership with their German twin town.



On Saturday morning, the artwork which had been prepared by various schools in the three twinning areas was shown to the crowd by a mix of young German, French and English twinnings. They then released doves to mark the end of the formal celebrations. The events continued on Sunday with a leisurely banquet for all 199 twinnings. My son wolfed down his

main course and declared it delicious, unaware that it was his first taste of foie gras and veal! The weekend finished with a more relaxed meal at home in smaller groups of families. At our dinner, the teenagers bonded while trying to avoid the earthworm or earwax Harry Potter jelly beans.

The weekend before Armistice Day, we returned the hospitality to 40 French guests. Everyone took advantage of a sunny Friday to show their guests around our area. Entertainment for the evening was a Ceilidh Dance - a memorable time of great fun and laughter enjoyed by all as shown below.



On Saturday, some of the French enjoyed an official tour of Cambridge including a much appreciated tour of Pembroke College. In the evening, many joined together for a remembrance ceremony and a moving concert of wartime music and songs led by Cottenham Brass Band, along with 'Singers for Fun'. Alternatively some chose to visit local firework parties.

All who participated in one or both of the weekends were able to renew existing friendships or make new ones. Our next visit to Avrillé will be 24th to 28th May 2019. If you are interested in taking part in the twinning as a singleton, a couple, a family or as part of a local group, please contact Julia Gwilt (juliagwilt@gmail.com) or Kit Kilgour (kitkilgour@yahoo.co.uk).

Waterbeach United Charities (Reg No 201528)

Waterbeach United Charities provide financial support or pays for services that help to alleviate individuals who are "in need or distress" who are residents of Waterbeach Parish.

Electric Wheelchairs - We have a number of electric wheelchairs for those in need. If you would like to be considered please let us know.

Distress Grants -The Trustees would like to hear from individuals who may be IN NEED OR DISTRESS. If you think we could help, and to find out whether you are eligible for assistance, whether it be loaning equipment to you, or providing financial support, please contact:

All personal applications are confidential.

Mrs S Wilkin, The Secretary, Waterbeach United Charities
25 Payton Way, Waterbeach, Cambridge CB25 9NS

Tithe Barn Trust

The Tithe Barn Trust is delighted to announce that we've been awarded grants of £6,000 from the Architectural Heritage Fund and another £6,000 in match funding by the Pilgrim Trust.

Gemma O'Shea, Chair of Trustees, says "This is fantastic news and means a lot to the Tithe Barn Trust, as we're a small charity and not-for profit volunteer group committed to saving the unique Tithe Barn, in Landbeach near Cambridge, for everyone to enjoy. We're going to use these grants to appoint a Fundraiser and Business Case Developer. This essential funding will be the enabler we need to help us reach our target of £260,000 to restore the special Grade II listed timber framed Tithe Barn. The public have been incredibly generous and donated over £60,000 already, but we still need to raise more. Our thanks go to the Architectural Heritage Fund (AHF) and the Pilgrim Trust." The AHF is a charity working to promote the conservation and sustainable re-use of historic buildings for the benefit of communities across the UK. The Pilgrim Trust aims to preserve and promote Britain's historical and intellectual assets and to provide assistance to vulnerable members of society.

Tithe Barns are increasingly rare in the UK and this is the only remaining one in Cambridgeshire in its original condition with thatched roof, timber frame, timber granary and brick threshing floor. Experts believe the barn dates to the medieval period.

Sadly the barn is in a state of disrepair and unless we act now we could lose this national treasure.

4 Ways YOU can get involved;

1. Donate today at www.totalgiving.co.uk/mypage/TitheBarnTrust
2. Become a Friend. Visit www.tithebarntrust.org.uk/become-a-member/
3. Volunteer or become a Trustee. Email tithebarntrust@gmail.com to find out more.
4. Come along to one of next events at the Tithe Barn -

Apple Gifting - This October visitors began their own apple gifting tradition at the Tithe Barn.

They were able to get hands-on and decorate an apple with twigs, rosehips and candied fruit. In the past these were offered around the community as a sign of friendship, good health and good luck. There was also Apple Bobbing to try.



Come along to one of our next events –

Carols at the Barn - Saturday 8th December, 2.30pm

Start your festive season with Carol singing and enjoy mulled wine or fruit juice and mince pies. Wrap up well.

Free admission to all our events, but donations are welcome towards the restoration of the Tithe Barn.

We're busy planning our events for 2019, so check out our website for the latest info - <https://tithebarntrust.org.uk/learning/>

Volunteer and get involved - We're a small charity and not-for profit volunteer group and always welcome help. Making new friends, working in an amazing place and knowing that you're helping a great cause – three fabulous reasons to get volunteering. If you'd like to get involved and help us achieve our vision get in touch. Email tithebarntrust@gmail.com to find out about our volunteering opportunities.

How to find the Tithe Barn - Gate entrance is opposite No 2 Waterbeach Road, Landbeach, Cambridge, CB25 9FA. Walk along the uneven grassed track. Free road parking, or No.9 Stagecoach bus stops at Landbeach High Street, near Cockfen Lane or Citi bus No.2.

Waterbeach Cycling Campaign

Waterbeach Cycling Campaign have been busy over the last few weeks putting together and publicising our response to the South Cambridgeshire District Council plan for the Waterbeach New Town (called the Supplementary Planning Document or SPD).

Our major concern with the SCDC plan is that the New Town will become a car centric development which prioritises space for motor traffic over space for people. The proposed road network is highly linked for cars, with primary schools located near major roads and the town centre located at a junction of two primary traffic routes. Locating schools close to roads will put children at risk of collisions with vehicles, and expose them to higher levels of air pollution which can cause many serious health issues.

We also have concerns about the impact of the development on the village – the plan proposes using Cody Road for access to new houses at the south of the New Town, as well as for access to the relocated train station.

We have developed and submitted to the District Council our own ideas for the new town – We have called this the 'People First' vision, as it prioritises space for people over motor vehicles. We would like to see traffic routed around the edge of the development, with schools located away from primary roads, and we would like the town centre to be a safe, vibrant social space, away from through routes for cars.

We are not suggesting that people cannot use cars to travel, (our plan

includes car access to every home within the development); we would just like it to be easier and quicker to walk or cycle to everyday destinations (the schools, shops, station) than to drive. Several similar developments in Europe have been designed with these principles (for example Houten in the Netherlands), which have led to high proportions (over 50%) of journeys made by walking or cycling.

We held a public meeting in the Baptist Church to share our ideas with the village, and have also held meetings with District Councillors and Planning Officers to discuss our plan. If you would like to learn more about our 'People First' plan for Waterbeach New Town, or join Waterbeach Cycle Campaign and support our work, you can find more details on our website: <https://bit.ly/2PBh9BR>

Healthy 4 Life

We are a friendly Exercise group which meets every Friday 12.00pm to 1.00pm in the community room at Waterbeach Barracks, (behind the museum). The exercises we do are gentle, some sitting, some standing in the hope that we stay mobile and independent for as long as possible. The age range is 50+ and some of us are in our 70s. Anyone who has age related aches and pains or suffered mild strokes, who wish to gain strength in our limbs is welcome. So get the New Year off to a good start! Contact Vanessa 07751 599826

Waterbeach Surgery Christmas 2018



**Prescription requests by
Monday 17th December please**



Christmas Closure times

We will open as normal, except for

***Monday 24th December – open in the morning
then available on telephone only after 1pm***

Tuesday 25th December – CLOSED

Wednesday 26th December – CLOSED

***Monday 31st December – open in the morning
then available on telephone only after 1pm***

Tuesday 1st January 2019 – CLOSED

If you need a doctor urgently when we are closed, please telephone 111

Special Visitor!

A special edition this time - not a resident as such but a very regular visitor...

Hello, my name is - well, I have quite a few names really, depending on whereabouts you live in the world, but around here I am usually known as Father Christmas. Even though I only pass through Waterbeach, Landbeach and Chittering once a year I always think how lovely it must be to live here. I would really like to come back for a holiday (perhaps in the summer) and do some of the lovely walks by the river, through Cow Hollow Wood and Worts Meadow. If I bring my boys there seems to be lots of fields for them to graze in, I'm sure they would like a holiday as well. We do get a lot of snow where we live, so it would be nice for them to see some grass!

I can tell from the notice boards I pass that there are lots of things to do in your villages... I wonder if I could try one of the exercise classes? My elves tell me that because I can't resist all the mince pies that you lovely people leave out for me, I could be very slightly overweight (although I think I carry it well) and losing a few pounds wouldn't hurt. It might make the hill starts easier for the reindeers as well.... I'm sure St. Andrew's Hill is getting steeper each year!

As you can imagine it is a very busy time of the year just now, the paperwork involved is enormous. I am happy to say that the "Good" list is much longer than the "Naughty" one, but I will still be checking on you all, right up until Christmas Eve.

Keep up the good work boys and girls and don't forget to send me your list in good time.

So, if I don't see you on Christmas Eve (and I do tend to pass through very quickly) then I would like to wish you all a very Happy Christmas – and perhaps I will see you in the summer!



Waterbeach Community Association Carols on Waterbeach Green

Christmas Eve
6.30pm

**Please remember to bring your
lights, lanterns and torches**



A copy of the carol sheet can be downloaded in advance from www.waterbeach.org

Waterbeach Scout Group



Santa's coming to your street! - Some of you may have already seen Santa and his helpers as he had to start early this year. However, he still has some more streets to visit, between 6pm and 8pm as detailed below.

Monday 3rd December: Waddelow Road, Denson Close, Primrose Lane, Rookery Close, Jubilee Close, Wiles Close, High Street, Vicarage Close, Greenside, Gibson Close, Chapel Street (from Village Stores to Cambridge Road), Coronation Close, Glebe Road, Mill Road, Harding Close, Saxon Way, Poorsfield Road and Cambridge Road.

Tuesday 4th December: Cattells Lane, Pieces Lane, Hartley Close, Pieces Court, Saberton Close, Pieces Terrace, Woodpecker Way, Burgess Road, Rosemary Road, Payton Way, Rosemary Road, St. Andrews Hill, Station Road, Lode Avenue, Adams Court, Whitmore Way, St. Johns Close, Chapel Close, Chapel Street, Greenside, Wellington Close and Barker Close.

Wednesday 5th December: Levitt Lane, Cheason Walk, Shipp's Field, Heron Walk, Pritchard Walk, Bannold Road, Anglers Way, Star Drive, Watermans Road, Hop Bine Drive, Harvey Way, Josiah Court, Park Crescent, Way Lane, Fenleigh Close, Spurgeons Avenue, Way Lane and Orchard Drive.

A licensed door-to-door collection will be made in aid of The Friends Of The Princess Of Wales Hospital, Ely and the Scout and Guide Hut Repair Fund. Thank you for your support.

Bingo - Our monthly Family Bingo is still going. Our next sessions will be Friday 14th December, Friday 11th January and Friday 8th February, 7-9pm

Jumble Sale - If you are having a clear out over Christmas, please think of us. We will be holding our annual Jumble Sale on Saturday 26th January 2019, 10am - 1pm. If you have any items for us to sell please leave at Scout Hut on Monday, Tuesday, Wednesday or Thursday evenings 6.30-8.00pm.

Fire and Rescue Service



Christmas is approaching! The time of year when we're enjoying a tippie with friends, cooking up festive feasts for the family and entertaining loved ones. With all the fun to be had it is easy to be distracted when cooking in the kitchen.

50 per cent of all fires in the home start in the kitchen and more than half of those are as a result of distraction whilst cooking.

We want to help ensure your festive cheer doesn't go up in smoke this Christmas by sharing our tips below for safe cooking over the festive season:

- Never leave cooking unattended
- Do not cook when tired or under the influence of alcohol, drugs or medication that makes you drowsy
- Regularly clean the grill pan and oven. Built up fat can easily catch fire
- Never leave anything cooking if you leave the house
- Do not leave anything flammable on or near the hob – tea towels, oven gloves and even washing baskets can catch fire
- Take care when using microwaves. Fires can start when people put food in too long.
- Oven chips or temperature control deep fat fryers are safer than using a chip pan. If you do use a chip pan, do not fill it more than one third with fat and turn the heat down if the oil starts smoking
- Fire can break out in household appliances so you should regularly maintain dishwashers, washing machines and driers, never leave them on if you go out or go to bed and register your appliances online to ensure you are made aware of any faults or recalls
- Have a working smoke alarm on each floor of your home. If it keeps going off when you are cooking it is probably in the wrong location or you may have the wrong type of smoke alarm
- Never take the batteries out of your smoke alarm.

If you do have a fire in the house, get out, stay out and dial 999.

For more information or to get in touch contact us at firefire@cambsfire.gov.uk or on 0800 917 9994.

For more information log on to www.cambsfire.gov.uk, follow us on social media or call 01480 444500.

Waterbeach United Charities (Reg No 201528)

(Clause 4 (2) grant)

Organisations are invited to apply for a grant from the above Charity subject to funds being available at the end of the financial year (December 2016).

Applications to be submitted in writing clearly stating the reasons for the grant and they should include details of any fund raising efforts that have been made. Closing date will be **31 December 2018**. These grants will be considered early in the New Year.

Not all applications may be successful and the Trustees' decision will be final. Please send details to:

Mrs S Wilkin, The Secretary, Waterbeach United Charities
25 Payton Way, Waterbeach, Cambridge CB25 9NS

Age UK

Age UK for Cambridge and Peterborough are offering free home energy checks this winter.

This is a free assessment identifying simple home energy savings that can be made to ensure your home is as safe and warm as possible. An approved handy person will visit your home and will be able to install simple items without a charge. If bigger needs are identified they will be able to support you in applying for appropriate grants and schemes. Telephone 0300 6669860 for more details.

Home Security Tips



Be Bright and Light - As the weather starts to change it is important to re-assess your home security, and take some simple steps to deter opportunist intruders. One of the key areas to consider as the clocks change and it gets dark earlier is to use lights on timer switches, and leave lights on to make your home look occupied.

- Secure entry and exit points, don't leave windows or doors unlocked or ajar. If you are away from your property for any length of time, make it look occupied using light timer switches, fake T.V. devices, and/or leaving a radio on, (do not draw all the curtains).
- Arrange for friends/ neighbours to periodically check your property.
- Avoid leaving keys and valuables within view/ reach of a window or door. Vehicle keys have been the target of a number of recent burglaries across South Cambs.
- If you have an alarm, make sure you use it (dummy systems are not recommended).
- Consider the security of sheds and outbuildings as these may be attractive to thieves looking for equipment such as chainsaws, hedge-trimmers or lawn-mowers, other hand tools may be used to break into a door or window.
- Register your property for free at www.immobilise.com you can register anything with a serial No. or upload photographs of more unique items.
- Visit our website for more detailed advice www.cambs.police.uk

Plastics

Having recently been to the Council Offices to speak on behalf of Waterbeach, Landbeach and Chittering against the Incinerator, I would like to ask if residents in Waterbeach are concerned about the amount of excessive plastic in our litter and recycling bins? I would be happy to set up a meeting to discuss a way forward, which could mean approaching local shops, but at the same time encouraging people to find ways to use less plastic. If you are interested please contact Norman Setchell at christian9@tiscali.co.uk

Happy Folks Club

Happy Folks Club are gaining in popularity. We have had a very good year and our members have been very supportive. Soon we are off to see Thursford Christmas spectacular, then have a party for members with entertainment. This will be followed by carols and cake the following week. The club will then close for Christmas and resume in the new year. Our first trip will be the club dinner at the No Hurry Inn at Upware. This is a firm favourite with our members. May I take this opportunity to wish you all a very merry Christmas and a happy new year.

Stuart Atkins

Stronger for Longer



A major new strength and balance campaign was launched this International Older People's day to help people in Cambridgeshire stay stronger for longer. The 'Stronger for Longer' campaign has been designed by Cambridgeshire County Council and CPFT to encourage older people (particularly women 70-79 years old) to take up strength and balance exercises twice a week to reduce their risk of falling and keep them doing the things they enjoy.

Strength and balance classes help local lady stay stronger for longer.

Jill Smith, who lives in Cambridge, started going to strength and balance classes about two years ago as part of her rehabilitation after a heart transplant. The 66-year-old is now reaping the rewards of regular exercise and can do the things she enjoys again.

"Strength and balance classes have particularly helped me with building up strength in my arms following my heart transplant," said Jill. "I wasn't able to use them after the operation. The exercises have helped me gradually build back up my strength and it's now easier to do things like shopping and carrying bags. I can do daily tasks like vacuuming and things at home that were really difficult before. I used to take for granted things like being able to get up from the floor but after my operation this was a problem. However this no longer fazes me - if I get down I know I can get up again and that's thanks to Sabrina the trainer at my strength & balance class."

Simple strength and balance exercises twice a week are proven to keep you stronger for longer so you can keep independent and enjoying the great things in life, whether it's playing with grandchildren, shopping, socialising with friends or gardening.

For success stories and more information on classes and activities in your area visit: www.cambridgeshire.gov.uk/strongerforlonger

The Stronger for longer campaign has been developed by Cambridgeshire County Council working with local NHS health partners.

Update from Lucy Frazer MP

As Christmas approaches and we near the end of another year, I wanted to reflect on the last 12 months which seem to have flown by once again.

I am very pleased plans for a waste disposal incinerator site at Waterbeach were rejected by Cambridgeshire County Council and that local concerns were heeded thanks to a well run local campaign by CBWIN. I am proud to have supported this.

I was very pleased to meet with residents involved in the Waterbeach Cycling Campaign earlier in the year to discuss ways and means of improving cycling infrastructure in the area which is so important.

I am also working with others, including the Mayor of Cambridgeshire and Peterborough to upgrade the A10.

Also ongoing is my commitment to local schools. £6m extra funding over 3 years, owing to the 'Opportunity Areas' status I helped secure for schools in East Cambridgeshire, is now being made available in the form of grants. My parliamentary inter-school debating competition, which encourages students to develop their debating skills, is now in its fifth year. In the last 3 months I have met with all the pupils taking part and this year's final is being judged by Sir Brian Leveson.

I have brought a number of Cabinet Ministers to our constituency this year to press our local causes including Education Secretary, Damian Hinds, Secretary for Environment, Food and Rural Affairs, Michael Gove and Secretary of State for Transport, Chris Grayling.

I always enjoy meeting constituents, whether welcoming you to Westminster or seeing you at an event, group gathering or surgery. If you would like to arrange a tour of the House of Commons for yourself or a group you belong to, please do send me an email. I am always happy to arrange this and wherever possible I will try to be around to say hello and answer any questions you have.

I am extremely grateful for your ongoing support and will continue to work hard on your behalf in the coming year.

If you have anything you wish to raise with me personally or would like to be added to my email newsletter distribution list please email me at lucy.frazer.mp@parliament.uk.

To keep up with everything I'm doing on a more frequent basis, you can also follow me on facebook <https://www.facebook.com/FrazerLucy/> or visit my web page www.lucyfrazer.org.uk

Wishing you a very merry Christmas and a happy new year.

Lucy Frazer MP

COMMUNITY ASSOCIATION MEMBERS

1 ST WATERBEACH BROWNIES	Tiffany Langton - 07846 961255
2 ND WATERBEACH BROWNIES	Penny Clay – 07915 046483
1 ST WATERBEACH GUIDES	Holli Bielby - 07779 408588
1 ST WATERBEACH RAINBOWS	June Stephen - 07956 949964
32 ND CAMBRIDGE (WATERBEACH) SCOUT GROUP	William Moon - 01223 440259
BEACH BALLS (WATERBEACH JUGGLING CLUB)	Liam Guyton - 07726 603763
BEACH SOCIAL CLUB	Geoff Donovan - 01223 571329
COMMUNITY ASSOCIATION CHAIRPERSON	Jacqui Rabbett - 01223 860993
COMMUNITY ASSOCIATION SECRETARY	Pam Clack - 01223 476601
FRIENDS OF WORTS MEADOW LANDBEACH	Robert Humphrey - 01223 863454
HAPPY FOLKS CLUB	Stuart Atkins - 01223 862674
ROYAL BRITISH LEGION - WATERBEACH & LANDBEACH	Norman Foster - 01223 474622
ST. JOHN'S CHURCH	Rev. Paul Butler - 07903 904599
ST. JOHN'S WATERBEACH WIVES	Sheila Gill - 01223 861999
WASPS (WATERBEACH AFTER SCHOOL PLAY SCHEME)	Zoe Badcock - 01223 861140
WATERBEACH & DISTRICT GARDENING CLUB	Jerry Cooper - 01223 574050
WATERBEACH ANGLING CLUB	Colin Brett - 01954 200956
WATERBEACH BADMINTON CLUB	Norman Setchell - 01223 862404
WATERBEACH BAPTIST CHAPEL	Martin Ensell - 01223 862494
WATERBEACH BRASS	David Pell - 01223 860396
WATERBEACH COLTS F.C.	Tara Saunders - 07841 642004
WATERBEACH COMMUNITY LAND TRUST	Ian Bracey - info@waterbeachclt.co.uk
WATERBEACH COMMUNITY PLAYGROUP	Jacqui Woods - 01223 440769
WATERBEACH DAY CENTRE FOR THE ELDERLY	Mary Longstaff - 01223 564666
WATERBEACH INDEPENDENT LENDING LIBRARY (WILL)	Maggie Crane - 01223 440560
WATERBEACH MILITARY HERITAGE MUSEUM	Adrian Wright - 01223 861846
WATERBEACH PARISH COUNCIL	Parish Clerk - 01223 441338
WATERBEACH SALVATION ARMY	Captain Carol Baker - 01223 506217
WATERBEACH SCHOOL P.T.A	Clare McDonald - 01223 718988
WATERBEACH THEATRE COMPANY	Julie Petrucci - 01223 880023
WATERBEACH TODDLER PLAYGROUP	Wayne Badcock - 07808 357729
WATERBEACH VILLAGE SOCIETY	Adrian Wright - 01223 861846
WATERBEACH WI	Sheila Lynn - 01223 860948
WAY PROJECT (WATERBEACH & LANDBEACH ACTION FOR YOUTH)	Caroline Ward - 07749 738870
WOODLAND TRUST - COW HOLLOW WOOD	Adrian Wright - 01223 861846

Other useful numbers:

BEACHES COMMUNITY CAR SERVICE	07807 875878
COMMUNITY WARDEN	07977 219403
DISTRICT COUNCILLOR	Judith Rippeth - 07956 528223
DOCTORS SURGERY – WATERBEACH	01223 860387
FIRE & RESCUE SERVICE - Non Emergency Calls	0800 9179994
LANDBEACH VILLAGE HALL	Anne Bullman - 01223 860692
PARISH PATHS GROUP	D. Armstrong - 01223 861586
POLICE - Non Emergency Calls	101
ST LAWRENCE'S CATHOLIC CHURCH	01223 704640
VILLAGE CORRESPONDENT	Maggie Crane - 01223 440560
WATERBEACH PARISH COUNCIL	Parish Clerk - 01223 441338
WATERBEACH SCHOOL	01223 718988
WATERBEACH TURBARY CHARITY	Pam Gooding - 01223 861003
WATERBEACH UNITED CHARITIES	Pam Gooding - 01223 861003

Waterbeach Barracks and Airfield

52.2656° N, 0.12910° E

The former barracks and airfield at Waterbeach offer a range of community facilities for local groups including:

- Sports Hall
- Studio area
- Tennis Courts
- Squash courts
- Community rooms

Military Heritage Museum

Open from 11am to 4pm on the first Wednesday and Sunday of each month, March to October, and by appointment with Adrian Wright (01223 861846).

Find out more

Urban&Civic hold regular events to keep you informed and give you the opportunity to shape the future development of this special place. If you or your local group would like to find out more, meet us for a coffee and have a tour of the site, contact Rebecca Britton on 07739 339 889 or email us: rbritton@urbanandcivic.com

Urban&Civic

waterbeachbarracks.co.uk





**All of this learning, exploring and imagination at
Little Stars Day Nursery and Preschool.**



 Little Stars Day Nursery

 @littlestarscamb

www.littlestarscambridge.co.uk

Buchanan Centre, Copper Road, Waterbeach, Cambridge, CB25 9LY

01223 861911